

RSM



VOLUME 15 ISSUE 2

WINTER 2007

RSM Mission Statement

The mission of the Right from the Start Medicaid Outreach Project is to enable pregnant women and children to receive comprehensive health services through Right from the Start Medicaid and related programs.

www.dfcs.dhr.georgia.gov/rsm

Right from the Start Medicaid



RSM Displays for Visions 2007



RSM Muscogee Team MES, Cynthia Johnson stands in front of her display.

Americus - With continuing efforts to educate Georgia's families on free and proper health care, the Right from the Start Medicaid Outreach Project joined several organizations in Sumter County to aid in the Agency Showcase 2007 Community Celebration.

The event was sponsored by Visions for Sumter and the Americus-Sumter Chamber of Commerce in the rotunda of the Pope Technology Center at South Georgia Technical College on October 23rd.

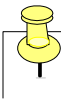





Organizations collaborated and distributed vital information to more than 300 patrons and students.

The event featured displays from

organizations such as: 4-E Learning and Prevention Center, 21st Century After School Program, The Food Bank of Southwest Georgia, Georgia Department of Labor/Vocational Rehabilitation, Healthy Families Americus, Project C.A.R.E, Sumter County Head Start, Sumter Area Ministerial Association, Sumter County Schools, WellCare of Georgia and many other health and non-profit.

"It was an amazing turn out. It's great to see all the area organizations collaborating to provide county residents with health information," said RSM Muscogee Team Medicaid Eligibility Specialist, Cynthia Johnson. "The keynote speaker was very knowledgeable and informative. This annual event allows community agencies to network and exchange program information." (continued on page 5)

Inside this issue:

Announcements 	Pg. 3
Maternal and Child Health Update 	Pg. 4
RSM Supports HMHB 	Pg. 5
RSM: Bi-National Approach 	Pg. 5
RSM: PRETTY 'N PINK 	Pg. 5
Guidelines for Office Parties 	Pg. 6

RSM: Meeting of the Metro Minds



Newly appointed Metro Manager, Judy Adan addresses her staff during the Annual RSM Metro Atlanta Office Meeting. Photo by: Deamphis Williams

Atlanta - Right from the Start Medicaid (RSM) Metro Atlanta staff members gathered to welcome their new Metro Manager, Judy Adan. The meet-

ing was held November 1st at the Dekalb County Decatur Branch Public Library. "We (RSM) want all area offices to assemble (continued on page 5)

7th Annual Winter Wonderland

DOOR PRIZES

Health Fair

SANTA

**Saturday, December 15th
9am - 1pm**

**Willie Freeman Health Dept.
1920 John Wesley Ave.
College Park, GA 30337**

HEALTH SCREENINGS

For More Information
Contact: Jean Pittman
M&S Fulton Team
(404) 765-4225



ANNOUNCEMENTS

RSM Promotes Supervisor to Manager



RSM Director Ken Duke greets newly promoted North Manager Bonnie Taylor.

Atlanta - With the numerous additions to the RSM staff, RSM Administration worked quickly in filling the North Manager vacancy.

Through a vigorous and analytical search RSM Administrators promoted Hall Team Supervisor Bonnie Taylor to North Manager.

Taylor makes up 25 percent of the RSM Managerial Team and will head the RSM offices in Carroll, Clarke, Hall, Paulding, and Whitfield counties.

"She knows RSM and has extensive experience with our office," said RSM Director Ken Duke. "We feel very comfortable with the decision and we should remain on track in accomplishing this year's North area goals."

Taylor is no stranger to the RSM Outreach Project. She began her stint with the unit in November 2003 and has supervised the Hall and Gwinnett teams.

She has prevalent training and involvement in Temporary Assistance for Needy Families (TANF), Food Stamps, Employment Services, Social Services Intake and Ongoing, Foster Care and Child Care Assistance.

Taylor, a graduate from Kennesaw State University, began her career with the State of Georgia in 1997 with the Cobb County Division of Family and Children Services (DFCS).

Promotions are nothing new to Taylor, she worked effectively as a Family Independence Case Manager (FICM) and was promoted twice.

She quickly adapted to the roles of FICM II and Error Control Specialist.

After three years with the Cobb County office, she transferred to the Bibb County DFCS office in 2000 and received a third promotion to FICM Supervisor. She garnered the duties of operating and overseeing TANF, Food Stamps, and Medicaid intake.

Taylor was later transferred to Houston County DFCS office where she served as Social Services Case Manager with the Foster Care Unit.

"I am extremely honored to assume the role of North Manager. I served in many roles during my years with RSM," said RSM North Manager Bonnie Taylor. "I want to thank everyone that was involved in the hiring process for selecting me. I am going to use my experiences working for the State of Georgia to continue servicing North area residents."

Taylor's duties will include conducting supervisory meetings, establishing area objectives, coordinating the Director's purpose, completing manager and area reports, evaluating employees, incorporating new ideas, implementing techniques, provide leadership, authorizes team recommendations, develop plans for unit programs, represent unit in the community, and monitoring all work sites to ensure staff members are working effectively.

"One objective I want to focus on is increasing the number of applications received. In order for the North area to improve, we have to execute more outreach events," said Taylor. "I have worked in many facets of our unit. I have formulated ideas that will help us bring our numbers up."

Taylor's plan of action involves visiting all North area offices and meeting team members face to face. In addition, she plans on attending local staff meetings and visiting outreach events.

Taylor has proposed restructuring ideas to divide up the counties and their coverage areas to better aid the applicants in the area.

Taylor will begin her managerial duties on December 1st.

RSM Prepares For Winter Wonderland

Atlanta - The Right from the Start Medicaid Outreach Project (RSM) will provide holiday health screenings and fun-filled games for families in the Atlanta Metropolitan area when it hosts the 7th Annual Winter Wonderland Health Fair, Saturday, December 15th, from 9 a.m. to 1 p.m. The holiday festival will be held in the Willie Freeman Health Department Building located at 1920 John Wesley Ave. in College Park.

The event will feature a special guest appearance by Santa Claus, who will hand out door prizes, goody bags and presents. In addition, RSM and local non-profit organizations will provide information on how to obtain affordable and low-cost health care. Parents will have the opportunity to register their children for Medicaid, PeachCare for Kids, and free identification cards with fingerprints. Free health screenings for blood pressure, high cholesterol, confidential rapid HIV testing, and diabetes will also be available.

"This event is one of our largest of the year. Last year, the fair was very successful and we look forward to this year's affair," said Fulton Team Medicaid Eligibility Specialist Evelyn-Jean Pittman. "With the help of some of the local non-profit agencies, we should bring smiles to a lot of young faces."

Organizations committed to assisting in the event include: the Fulton County Health Department, AID Atlanta, The American Kidney Foundation, American Diabetes, S.A.F.E Kids, Ident-A-Kids, Planned Parenthood of Georgia, ZAP Asthma Consortium, Cancer Quest, Mental Health Comprehensive Services, the Georgia Chapter of the Lupus Foundation of America, the Domestic Violence Program, American Heart Assoc., the Grady Rape Crisis Center, Lead Poison Prevention, and the Georgia Partnership for Caring Foundation.

MES Cothran Garners Supervisor Position

Jefferson - To keep the North Team's infrastructure on pace, RSM promoted Hall Team MES Jill Cothran to Clarke Team Supervisor. Cothran has been with RSM since 2000.

"She was the best candidate for the position and changes that will occur with our North Area offices," said hiring and Metro Manager Judy Adan.

Cothran began her role as supervisor on November 1st and will oversee the day-to-day operations of the Clarke County team.

State of Georgia."

Jackson spent 13 years working as a state employee. During her term, she worked 10 years with RSM.

"I want to thank the State of Georgia and Ken for the opportunity, I enjoyed working with a caring and hardworking staff," Jackson said. "The feeling of leaving the office is a bit strange. When longevity is involved in the work place, it feels close to home. Co-workers begin to feel like family and that's what makes leaving hard.

Jackson is relocating to Montezuma, Ga. but has not decided whether she will seek future employment with the area state office.

RSM Bids Farewell to Program Assistant Doris Jackson



Program Assistant/DEO Doris Jackson sits behind her desk reminiscing of fond moments with the RSM staff. Jackson served the State of Georgia for more than ten years.

Atlanta - Long time State of Georgia employee and RSM Program Assistant/Data Entry Operator Doris Jackson announced she will be leaving the unit at the end of November.

Jackson began her stint with the state office in 1994. She later joined RSM in 1997 assuming dual roles as a program assistant and data entry operator. In addition, she served as the personal assistant to RSM Director, Ken Duke.

"We wish Doris the best on all her future endeavors. She is truly a reliable asset to our state office team," said RSM Director Ken Duke. "Doris was influential in our office running effectively. We appreciate her service to RSM and the

In The News

Maternal and Child Health Update

Report Courtesy of Sandra Pittman, Ph.D, Medical College of Georgia
 smpittman@mcg.edu

Access to Prenatal Care

Compare first trimester entry into PNC over the past ten years by race.

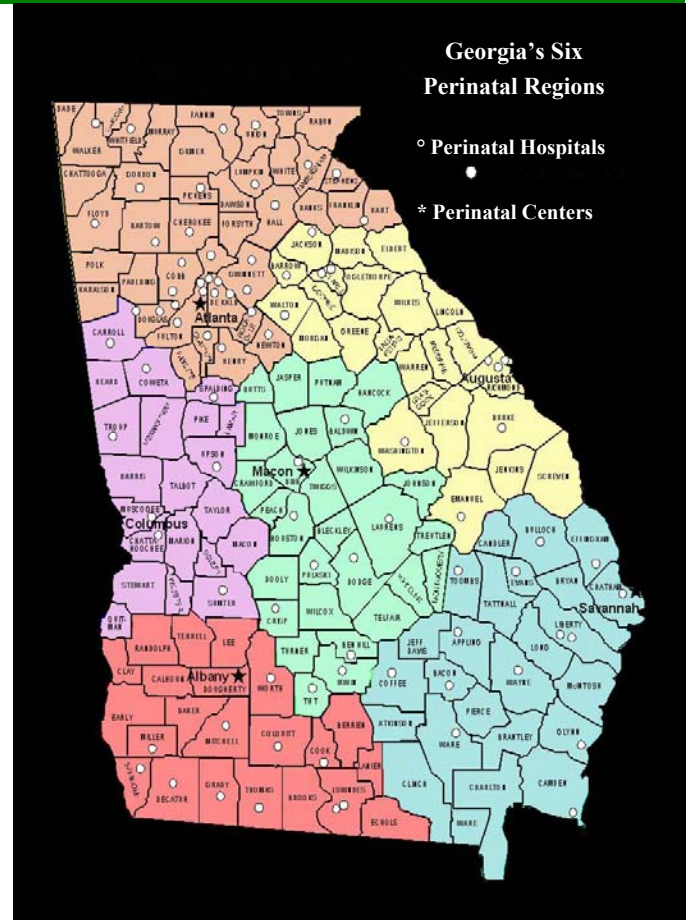
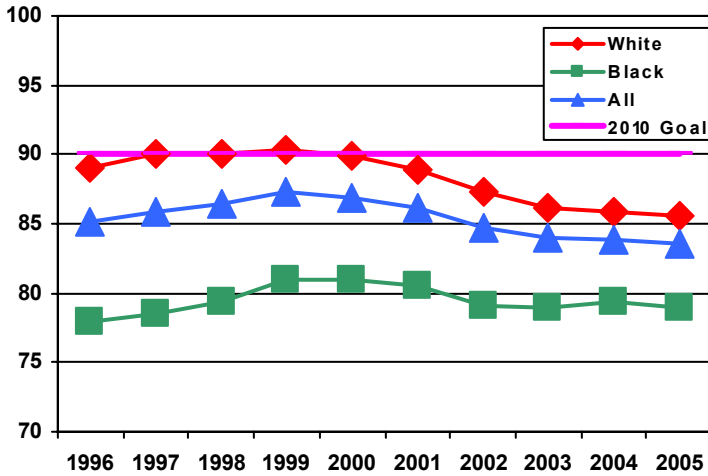
Review of Public Sources of funding for prenatal care.

Relate public policy factors that have implemented access to PNC.

Examine other factors that may have impacted

- Factors**
1. Budget strapped public health
 2. Young age of pregnant woman
 3. Unplanned pregnancies
 4. Availability of physicians providing PNC
 5. Provider reimbursement
 6. Systems issues
 7. Depression
 8. Lack of transportation
 9. Immigrant women
 10. Citizenship/identification documentation rules
 11. Confusion reselection of CMO and PCP

Percent First Trimester Prenatal Care



Public Funding Sources for Direct Services to Pregnant Women

- 0-200% PE-- presumptive eligibility
- 0-200% RSM-- Right From the Start Medicaid
- 201-235% PeachCare for Kids
- 0-200% Medically Needy (Spend Down) Medicaid
- 0-250% Babies Born Healthy, if ineligible for Medicaid

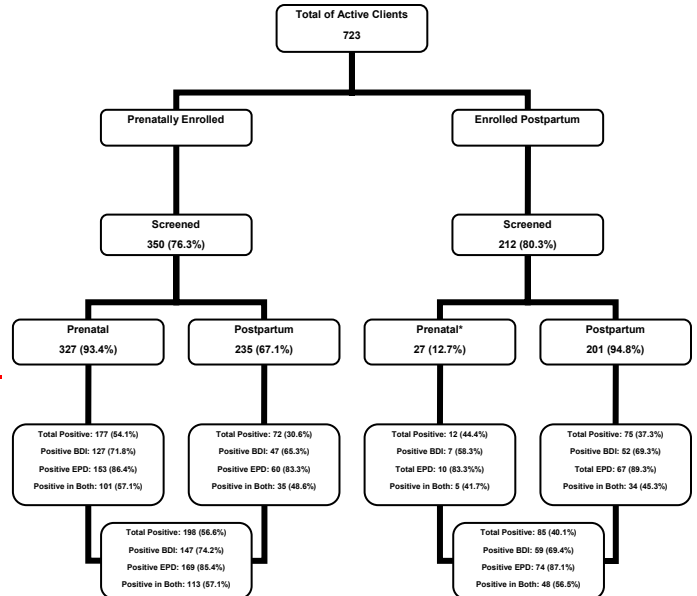
Depression screening results

January 1, 2002—September 11, 2007

*Depression screening done prenatally, enrolled in ECHS program postpartum.

Public Policy Timeline

Year	Public Policy Change
1993	RSM 185% Federal Poverty Level (FPL)
11/1998	Implementation of State Child Health Insurance Program (SCHIP) 235% FPL
1999-00	RSM 200% FPL
2001-03	RSM 235% FPL
7/2004	RSM 200% FPL
2005	RSM 200% FPL (Tort reform)
2006	RSM 200% FPL (Immigration/ID policies instituted)
10/2006	Statewide rollout of managed care
2007	RSM 200% FPL



References

- Alexander, S. (2007, September). Department of Community Health. Personal communication via email re. FPL by year for RSM
- Cota, P. (2007, September). Georgia Obstetrical & Gynecology Society. Personal communication via phone and email re. tort reform and availability of physicians practicing obstetrics.
- Department of Health and Human Services. Midcourse review: Maternal, Infant, and Child Health. 2010 Objectives and Sub objectives.
<http://www.healthypeople.gov/data/midcourse/html/focusareas/FA16Objectives>
- Documentation rule hurts Medicaid-eligible citizens: Report from GAO. (2007, September). State Health Watch, 14 (9), 1-6.
- Duke, Ken. (2007, October). Telephone conversation re. Presumptive Eligibility and Right from the Start Medicaid.
- Georgia Division of Public Health. Birth Certificate Files, 1996-2005.
- Pittman, S. (2007, September). Depression screening results January 1, 2002—November 11, 2007. Enterprise Community Healthy Start Program, Augusta, GA.

Metro Continued... from pg. 1

and discuss plans, objectives and outreach ideas. It gives the staff a chance to meet with each other to develop and strengthen as a cohesive unit," said RSM Director Ken Duke. "It was great to see the staff convene and show their support for Judy."

The meeting was topped by a formal introduction of newly hired Metro Manager Judy Adan. Adan expressed her concerns and challenged the metro team by stating objectives for the fiscal year.

A "meet and greet" session was conducted by Medicaid Eligibility Specialist, Clarissa Felix and Dekalb County RSM Team Supervisor Gary Simms.

Both team members headed their own presentations. Felix addressed outreach techniques and Simms followed with an overview of non-traditional hours.

Staff members then viewed a video photo montage of various Metro Atlanta outreach events.

Public Relations Specialist, Zena Lewis gave a virtual tour of the RSM web page and other important web links. RSM Director Ken Duke closed the meeting with acknowledgments and expectations.

"The meeting was very informative and entertaining. We had a chance to tackle important issues within the office," said Metro Manager, Judy Adan.

RSM Pinks Up: Helps Promote Breast Cancer Awareness



Fulton MES, Evelyn Pittman sits ready to provide information.

Atlanta - Right from the Start Medicaid Fulton Team members showed their supportive colors at the 2007 Pretty 'N Pink.

The event was hosted by P. 31 More Than Rubies, Inc. in partnership with the Morehouse School of Medicine.

P.31 More Than Rubies, Inc is a nonprofit organization that focuses on educating and training young women of all races and ages to become positive role models in their communities.

The one day event focused on cancer awareness and featured Founder and President of shades of Pink, Inc. M. Nichole Hancock, M. Ed.

BET's Comic View Comedian Chinnitta Morris (formerly known as Chocolate) served as the Mistress of

Ceremonies.

RSM joined in the awareness efforts providing information on breast and cervical cancer.

"The Pretty 'N Pink was a very successful outreach event," Fulton Team MES Natasha Anderson said. "We were able to target and educate women of all ages"

The event serviced more than 700 women who have survived or had a family member survive cancer.

The overall outcome of the event was phenomenal," said P.31 CEO Brandy Ford. "P.31 More Than Rubies, Inc. accomplished its goal of bringing cancer awareness to a young generation of girls, as well as having an older generation of women present and participate."



P. 31, More Than Rubies Inc. CEO Brandy Ford joins the future breast cancer awareness advocacy at Pretty 'N Pink

Members of RSM Attend HMHB Conference

Atlanta - One of the most important factors in health awareness is networking and solidifying a working relationship with other health organizations.

Members of RSM showed their support for the Healthy Mothers, Healthy Babies Coalition of Georgia by attending the organization's one day conference and annual meeting.

The event featured guests speakers who enlightened the audience with current studies ranging from maternal updates to lead poisoning prevention.

Exhibits were displayed and a silent auction was held with all proceeds going to the hosting organization.

Legislative Advocate Mary Frances Williams and Representatives Judy Manning and Kathy Ashe, highlighted the meeting with an advocacy workshop.

"We feel it is important to support other community organizations," said RSM Dekalb County Supervisor Gary Simms. "We are on the same mission in regards to educating residents on proper healthcare."

RSM Visions Continued... from pg. 1

Cowboy, industrialist, psychologist, and award-winning author, Dr. Michael Johnson, spoke at the annual event.

Before his arrival, Dr. Johnson visited area schools including Sumter Middle School and Staley Middle School.

Dr. Johnson enlighten students with his immense humor and stressed his concerns for after school programs.

"I was so impressed with the welcome from all the schools," said Dr. Johnson. "Everyone was so receptive!"

The program was filled with many motivational speakers and community stand-outs.

Chairman of Visions for Sumter, Norman Race, opened the program welcoming all in attendance.

Following Race's formal introductions, evangelist Buford Snipes

delivered the invocation.

Dr. Carvin Brown, Executive Director for our Georgia Accrediting Commission reported the scorecard concerning the successes of the after school programs.

The program concluded with Dr. Johnson's guitar solo.

"It is important to keep people aware of our community collaborations. I believe it is critical to the success of Sumter County to collaborate with those serving on the front line in order to find ways to support residents," said Visions for Sumter Coordinator Angela Westra. "It is also important to not only talk about improvements, but to utilize events like this to celebrate our successes as well."

RSM Joins SBC in Annual Awareness



Atlanta - Fulton County RSM continued their support of breast cancer awareness by providing an outreach display at the Annual Breast Cancer Awareness Educational Seminar during the 17th Annual Breast Cancer Awareness Weekend.

Sisters...By Choice, Inc. a non profit organization geared toward counseling and aiding women with cancer, sponsored the three day affair.

Spotlight on the Cure "Sisters Night Out", a private movie premier at Regal Cinemas 16 at Atlantic Station, sparked an entertaining and

informative weekend.

Next, an annual golf and tennis tournament was held at the Durham Lakes Golf and Country Club in Fairburn. An awards banquet was held following the tournament.

The Educational Seminar was held at the Global Learning and Conference Center on the campus of the Georgia Institute of Technology.

"Sisters By Choice is a very informative organization that spreads breast awareness," said Fulton MES Jennifer Ochs. "It was a well organized event and we look forward to continuing our support."

The weekend concluded with a "Celebration of Survivors Event". Gospel recording artist Vanessa Bell Armstrong performed and all proceeds from the weekend events went to charity.

RSM Aids Mexican Consulate in Health Awareness Campaign



Atlanta - To help bridge the communication gap between RSM services and the Latino community, RSM performed a significant Medicaid outreach by attending the Mexican Consulate of Atlanta's Bi-national Health Awareness week.

The event supported the Metro Atlanta Hispanic communities and spearheaded the submittal of accurate information on affordable healthcare.

The event, which lasted six days, catered to thousands of patrons. The Consulate's office established the event and brought in local organizations to aid in helping Hispanic residents.

"More than half of RSM applicants are Hispanic," said Metro Manager Judy Adan. "We have the best interest for Georgia residents and that is to help provide affordable proper health coverage to those individuals who are eligible."

Office Notes



mugs and dig into this hot drink! Clean your coffee maker according to the manufacturer's instructions before using for coffee again.

Ingredients

- 1/4 cup packed brown sugar
- 1/2 teaspoon whole allspice
- 1 whole cloves
- 1 cinnamon stick
- 1/4 teaspoon salt
- 1 pinch ground nutmeg
- 1 large orange, quartered with peel
- 2 quarts apple cider

Directions

Place filter in coffee basket, and fill with brown sugar, allspice, cloves, cinnamon stick, salt, nutmeg, and orange wedges. Pour apple cider into coffee pot where the water usually goes. Brew, and serve hot.

Courtesy of allrecipes.com

Hot Spiced Cider

PREP TIME 5 Min
COOK TIME 5 Min
READY 10 Min

This recipe uses an automatic coffee maker to brew the cider. If you do not have one, heat in a slow cooker or a saucepan over medium heat on the stovetop. Grab your

Office Christmas Parties

Celebrating a successful year bonds employees, and within larger companies Christmas parties help departments meet and mingle with people in the same firm they might otherwise never interact with.

However, it is necessary to socialize and build upon the relationships your office fostered. If you fit into the work social scene, you will prosper in the workplace as a result of your bonding session gained at the company Christmas party! We have compiled a list of things you must know when attending the company Christmas party:

What to wear to an Office Christmas Party

Men - If in doubt, try over dressed, rather than under. We prefer dark trousers, pants or slacks, and a smart shirt. Remember how to iron. Always ensure your shirt has a collar. Make sure you're comfortable, there's a good chance you'll eat and drink a lot, and you don't want to split your pants.

Ladies - Smart casual is usually the best bet for a function of this sort. Make sure you wear comfortable shoes, there is a good chance the night will wear on for some time. You will be on your feet a lot, and you don't want black toenails from high heels.

What can you talk about... what should you avoid

Work is over - We realize that work may be a common interest point with others at the Christmas party, but this is your chance to really get to know one another. Show what an interesting and attentive person you are by becoming acquainted with your colleagues on a social level. Bosses, supervisors and managers especially like to avoid the work topic, and it won't go down well with them to bring it up. They're trying to escape it too.

PC rules still apply - Politics, sex, toilet humor, religion, women, races... all those subjects which happen to include a barrage of bad jokes and can be touchy subjects should be avoided. Remember that outside of work, people still have feelings and opinions. Badly approached topics on these subjects may result in heated debates and personality mismatches. Avoid these at all cost. Try talking about the weather.

How much to eat and drink

It is Free - By all means, take advantage of the ever-pouring drinks and the plentiful free food... but, remember your own limitations. Pacing yourself is important.

Social ineptitude at it's finest

Meet & Mingle - If you see someone sitting on their own in a dark corner, help them out and go speak. That goes for anyone who might be a little shy, or even new to the company. Some firms encourage people to bring their partners, and they often feel strange not knowing anyone. Help them feel comfortable. You may forge a valuable alliance. Make sure you've got a stack of business cards in your top pocket, or in a handy place in your handbag.

Kisses, Hugs.. and maybe more - Not at the Christmas party. Remember that sexual harassment laws still apply at work functions. Be jovial, expressive, but not sleazy

Complaints - Remember, this is supposed to be a fun occasion. Don't whine about the food, service, venue, company, drinks etc. Pretend you're enjoying yourself. Pretend. Make-believe. Children can do it.

Presents - If your company traditionally gives presents at the Christmas party, be tasteful. Don't exploit people's sensitivities, and certainly don't buy anything that might offend them.

Courtesy of: cairnsdining.com

BIRTHDAYS

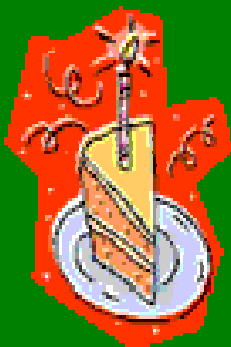
December

Nancy Kudela 1st
Jamie Anderson 3rd
Barbara Ortiz 3rd
Anna Epps 5th
Jody Isley 8th
Claquery Julmisie 9th
Britt Mecks 12th
Brant Kennedy 12th
Guadalupe Erazo 12th
Ken Duke 13th
Mileana Ruth 15th
Irene Weaver 15th
Corrie Garrison 16th
LaMaya King 18th
Esperanza Reyes 18th
Alma Mancilla 18th
Holly Dirst 19th
Charlene Lee 18th
Jennifer Ochs 21st
Ketsia Benoit 21st
Rosemary Nelson 25th
Teresa Wilson 25th
Jill Cothran 25th



January

Elaine Haizlip 2nd
Darrick Wilson 8th
Julie Castanon 10th
Donna Johnson 11th
Kacy McBurnett 11th
Tina Murphy 15th
Deborah Avant 17th
Paula Bennett 17th
Thomas Meyer 17th
Donna Waters 21st
Cynthia Johnson 23rd
Pamela Alexander 24th
Cahn Thomas 28th
Jessica Gresham 28th





WANTED

CONTRIBUTING WRITERS
AND STORY IDEAS.

IF YOU WOULD LIKE TO
SUBMIT AN ARTICLE, OR
PITCH A STORY FOR THE
RSM TIMES

PLEASE CONTACT
ZENA LEWIS AT
zolewis@dhr.state.ga.us



1-800-809-7276

www.dfcs.dhr.georgia.gov/rsm



2 Peachtree Street, N.W.
Suite 21-423

RSM Times Staff, Winter Issue 2007

Published by Right from the Start Medicaid Outreach Project

Ken Duke, Director
Zena Lewis, Public Relations and Information Specialist
Gwennell Strong, Program Administrator and RSM Times Editor
Deamphis Williams, Medicaid Eligibility Specialist and Contributing
Photographer

